

IN THE DISTRICT COURT OF THE FIFTH JUDICIAL DISTRICT OF THE
STATE OF IDAHO, IN AND FOR THE COUNTY OF TWIN FALLS

In Re CSRBA) PARTIAL DECREE PURSUANT TO I.R.C.P. 54(b)
Case No. 49576) FOR FEDERAL RESERVED
)
) WATER RIGHT NO. 91-07933A

NAME AND ADDRESS: UNITED STATES OF AMERICA ACTING THROUGH
USDA FOREST SERVICE
550 W FORT ST MSC 033
BOISE ID 83724

SOURCE: See Attachment 1, Column A TRIBUTARY: See Attachment 1, Column B

Sources are located on National Forest System Land in the Timber Creek-St. Joe River subwatershed (HUC12 170103040103).

QUANTITY: The amount of water necessary to control and suppress forest fires.

PRIORITY DATE: 11/06/1906

POINT OF DIVERSION: See Attachment 1, Columns C through G

PURPOSE AND PERIOD OF USE:

<u>PURPOSE OF USE</u>	<u>PERIOD OF USE</u>
Administrative-Fire Suppression	01/01 - 12/31

PLACE OF USE: National Forests in Idaho and the Kaniksu, Lolo and Kootenai National Forests in Montana.

See Attachment 2.

OTHER PROVISIONS NECESSARY FOR DEFINITION OR ADMINISTRATION OF THIS WATER RIGHT:

This right is limited to the intermittent diversion and use of water for the purpose of suppressing wildfires. This water right shall not be used as a basis to prevent the future appropriation of water.

This partial decree is subject to such general provisions necessary for the definition of the rights or for the efficient administration of the water rights as may be ultimately determined by the Court at a point in time no later than the entry of a final unified decree. Idaho Code § 42-1412(6).

RULE 54(b) CERTIFICATE

With respect to the issues determined by the above partial judgment it is hereby CERTIFIED, in accordance with Rule 54(b), I.R.C.P., that the court has determined that there is no just reason for delay of the entry of a final judgment and that the court has and does hereby direct that the above partial judgment is a final judgment upon which execution may issue and an appeal may be taken as provided by the Idaho Appellate Rules.

Eric J. Wildman
Presiding Judge of the
Coeur d'Alene-Spokane River Adjudication

Attachment 1

	A	B	C	D	E	F	G
001	SOURCE NAME	TO TRIBUTARY	TOWNSHIP	RANGE	SECTION	QQ	SURVEY CODE AND NUMBER
002	Timber Creek	St Joe River	42N	08E	01		
003	Unnamed Stream	Timber Creek	42N	08E	01		
004	Unnamed Stream	Timber Creek	42N	08E	01		
005	Unnamed Stream	Timber Creek	42N	08E	01		
006	Unnamed Stream	Timber Creek	42N	08E	01		
007	Unnamed Stream	Timber Creek	42N	08E	01		
008	Unnamed Stream	Timber Creek	42N	08E	01		
009	Unnamed Stream	Timber Creek	42N	08E	01		
010	Unnamed Stream	Timber Creek	42N	08E	01		
011	Unnamed Stream	Timber Creek	42N	08E	01		
012	Unnamed Stream	Timber Creek	42N	08E	01		
013	Unnamed Stream	Timber Creek	42N	08E	01		
014	Unnamed Stream	Timber Creek	42N	08E	01		
015	Unnamed Stream	Timber Creek	42N	08E	01		
016	Unnamed Stream	Timber Creek	42N	08E	01		
017	Unnamed Stream	Timber Creek	42N	08E	01		
018	Unnamed Stream	Timber Creek	42N	08E	01		
019	Unnamed Stream	Timber Creek	42N	08E	01		
020	Timber Creek	St Joe River	42N	08E	02		
021	Unnamed Stream	Timber Creek	42N	08E	02		
022	Unnamed Stream	Timber Creek	42N	08E	02		
023	Unnamed Stream	Timber Creek	42N	08E	02		
024	Unnamed Stream	Timber Creek	42N	08E	02		
025	Unnamed Stream	Timber Creek	42N	08E	02		
026	Unnamed Stream	Timber Creek	42N	08E	02		
027	Unnamed Stream	Timber Creek	42N	08E	02		
028	Unnamed Stream	Timber Creek	42N	08E	02		

Attachment 1

	A	B	C	D	E	F	G
001	SOURCE NAME	TO TRIBUTARY	TOWNSHIP	RANGE	SECTION	QQ	SURVEY CODE AND NUMBER
029	Unnamed Stream	Timber Creek	42N	08E	02		
030	Unnamed Stream	Timber Creek	42N	08E	02		
031	Unnamed Stream	Timber Creek	42N	08E	02		
032	Unnamed Stream	Timber Creek	42N	08E	02		
033	Unnamed Stream	Timber Creek	42N	08E	03		
034	Unnamed Stream	Timber Creek	42N	08E	03		
035	Unnamed Stream	Timber Creek	42N	08E	03		
036	Unnamed Stream	Timber Creek	42N	08E	03		
037	Unnamed Stream	Timber Creek	42N	08E	03		
038	Unnamed Stream	Timber Creek	42N	08E	03		
039	Unnamed Stream	Timber Creek	42N	08E	04		
040	Unnamed Stream	Timber Creek	42N	08E	04		
041	Unnamed Stream	Timber Creek	42N	08E	04		
042	Unnamed Stream	Timber Creek	42N	08E	09	NENE	
043	Unnamed Stream	Timber Creek	42N	08E	09	NENW	
044	Unnamed Stream	Timber Creek	42N	08E	09	NWNE	
045	Unnamed Stream	Timber Creek	42N	08E	09	NWNE	
046	Unnamed Stream	Timber Creek	42N	08E	09	NWNE	
047	Unnamed Stream	Timber Creek	42N	08E	09	NWNE	
048	Unnamed Stream	Timber Creek	42N	08E	09	SENE	
049	Unnamed Stream	Timber Creek	42N	08E	09	SENE	
050	Unnamed Stream	Timber Creek	42N	08E	09	SENE	
051	Unnamed Stream	Timber Creek	42N	08E	09	SENE	
052	Unnamed Stream	Timber Creek	42N	08E	09	SENE	
053	Unnamed Stream	Timber Creek	42N	08E	09	SENE	
054	Unnamed Stream	Timber Creek	42N	08E	09	SENE	
055	Unnamed Stream	Timber Creek	42N	08E	09	SENE	

Attachment 1

	A	B	C	D	E	F	G
001	SOURCE NAME	TO TRIBUTARY	TOWNSHIP	RANGE	SECTION	QQ	SURVEY CODE AND NUMBER
056	Unnamed Stream	Timber Creek	42N	08E	09	SWNE	
057	Unnamed Stream	Timber Creek	42N	08E	09	SWNE	
058	Unnamed Stream	Timber Creek	42N	08E	09	SWNE	
059	Timber Creek	St Joe River	42N	08E	10		
060	Unnamed Stream	Timber Creek	42N	08E	10		
061	Unnamed Stream	Timber Creek	42N	08E	10		
062	Unnamed Stream	Timber Creek	42N	08E	10		
063	Unnamed Stream	Timber Creek	42N	08E	10		
064	Unnamed Stream	Timber Creek	42N	08E	10		
065	Unnamed Stream	Timber Creek	42N	08E	10		
066	Unnamed Stream	Timber Creek	42N	08E	10		
067	Unnamed Stream	Timber Creek	42N	08E	11	NENE	
068	Unnamed Stream	Timber Creek	42N	08E	11	NWNE	
069	Timber Creek	St Joe River	42N	08E	11	NWNW	
070	Unnamed Stream	Timber Creek	42N	08E	11	NWNW	
071	Unnamed Stream	Timber Creek	42N	08E	11	SENE	
072	Unnamed Stream	Timber Creek	42N	08E	11	SWNE	
073	Unnamed Stream	Pole Creek	42N	08E	12		
074	Unnamed Stream	St Joe River	42N	08E	12		
075	Unnamed Stream	Timber Creek	42N	08E	12		
076	Unnamed Stream	Timber Creek	42N	08E	12		
077	Unnamed Stream	Timber Creek	42N	08E	12		
078	Unnamed Stream	Timber Creek	42N	08E	12		
079	Unnamed Stream	Timber Creek	42N	08E	12		
080	Unnamed Stream	Timber Creek	42N	08E	12		
081	Unnamed Stream	Timber Creek	42N	08E	12		
082	Unnamed Stream	Timber Creek	42N	08E	12		

Attachment 1

	A	B	C	D	E	F	G
001	SOURCE NAME	TO TRIBUTARY	TOWNSHIP	RANGE	SECTION	QQ	SURVEY CODE AND NUMBER
083	Unnamed Stream	Timber Creek	42N	08E	12		
084	Unnamed Stream	Timber Creek	42N	08E	12		
085	Unnamed Stream	Timber Creek	42N	08E	12		
086	Unnamed Stream	Timber Creek	42N	08E	12		
087	Pole Creek	Ruby Creek	42N	08E	14		
088	Unnamed Stream	Pole Creek	42N	08E	14		
089	Unnamed Stream	Ruby Creek	42N	08E	14		
090	Unnamed Stream	Ruby Creek	42N	08E	14		
091	Unnamed Stream	Timber Creek	42N	08E	14		
092	Timber Creek	St Joe River	42N	08E	16		
093	Unnamed Stream	Timber Creek	42N	08E	16		
094	Unnamed Stream	Ruby Creek	42N	08E	22		
095	Unnamed Stream	Ruby Creek	42N	08E	22		
096	Unnamed Stream	Ruby Creek	42N	08E	22		
097	Unnamed Stream	Ruby Creek	42N	08E	22		
098	Ruby Creek	St Joe River	42N	08E	24		
099	Unnamed Stream	Ruby Creek	42N	08E	24		
100	Unnamed Stream	Ruby Creek	42N	08E	24		
101	Unnamed Stream	Ruby Creek	42N	08E	24		
102	Unnamed Stream	Ruby Creek	42N	08E	24		
103	Ruby Creek	St Joe River	42N	08E	26		
104	Unnamed Stream	Ruby Creek	42N	08E	26		
105	Unnamed Stream	Ruby Creek	42N	08E	26		
106	Unnamed Stream	Ruby Creek	42N	08E	26		
107	Unnamed Stream	Ruby Creek	42N	08E	26		
108	My Creek	Ruby Creek	42N	08E	36		
109	Unnamed Stream	My Creek	42N	08E	36		

Attachment 1

	A	B	C	D	E	F	G
001	SOURCE NAME	TO TRIBUTARY	TOWNSHIP	RANGE	SECTION	QQ	SURVEY CODE AND NUMBER
110	Game Creek	St Joe River	42N	09E	04		
111	Halm Creek	St Joe River	42N	09E	04		
112	Unnamed Stream	Game Creek	42N	09E	04		
113	Unnamed Stream	Game Creek	42N	09E	04		
114	Unnamed Stream	Halm Creek	42N	09E	04		
115	Unnamed Stream	Halm Creek	42N	09E	04		
116	Unnamed Stream	Halm Creek	42N	09E	04		
117	Unnamed Stream	St Joe River	42N	09E	04		
118	Halm Creek	St Joe River	42N	09E	05		
119	St Joe River	Coeur d'Alene Lake	42N	09E	05		
120	Unnamed Stream	Game Creek	42N	09E	05		
121	Unnamed Stream	Game Creek	42N	09E	05		
122	Unnamed Stream	Game Creek	42N	09E	05		
123	Unnamed Stream	Halm Creek	42N	09E	05		
124	Unnamed Stream	Halm Creek	42N	09E	05		
125	Unnamed Stream	Halm Creek	42N	09E	05		
126	Unnamed Stream	St Joe River	42N	09E	05		
127	Unnamed Stream	St Joe River	42N	09E	05		
128	Unnamed Stream	St Joe River	42N	09E	05		
129	Unnamed Stream	St Joe River	42N	09E	05		
130	Unnamed Stream	St Joe River	42N	09E	05		
131	Unnamed Stream	St Joe River	42N	09E	05		
132	Unnamed Stream	St Joe River	42N	09E	05		
133	Unnamed Stream	St Joe River	42N	09E	05		
134	Unnamed Stream	St Joe River	42N	09E	05		
135	St Joe River	Coeur d'Alene Lake	42N	09E	06		
136	Timber Creek	St Joe River	42N	09E	06		

Attachment 1

	A	B	C	D	E	F	G
001	SOURCE NAME	TO TRIBUTARY	TOWNSHIP	RANGE	SECTION	QQ	SURVEY CODE AND NUMBER
137	Unnamed Stream	St Joe River	42N	09E	06		
138	Unnamed Stream	St Joe River	42N	09E	06		
139	Unnamed Stream	St Joe River	42N	09E	06		
140	Unnamed Stream	St Joe River	42N	09E	06		
141	Unnamed Stream	St Joe River	42N	09E	06		
142	Unnamed Stream	St Joe River	42N	09E	06		
143	Unnamed Stream	Timber Creek	42N	09E	06		
144	Unnamed Stream	Timber Creek	42N	09E	06		
145	Unnamed Stream	Timber Creek	42N	09E	06		
146	Unnamed Stream	Timber Creek	42N	09E	06		
147	Unnamed Stream	Timber Creek	42N	09E	06		
148	Unnamed Stream	Timber Creek	42N	09E	06		
149	St Joe River	Coeur d'Alene Lake	42N	09E	07		
150	Unnamed Stream	St Joe River	42N	09E	07		
151	Unnamed Stream	St Joe River	42N	09E	07		
152	Unnamed Stream	St Joe River	42N	09E	07		
153	Unnamed Stream	St Joe River	42N	09E	07		
154	Unnamed Stream	St Joe River	42N	09E	07		
155	Unnamed Stream	St Joe River	42N	09E	07		
156	Unnamed Stream	St Joe River	42N	09E	07		
157	Unnamed Stream	St Joe River	42N	09E	07		
158	Unnamed Stream	Timber Creek	42N	09E	07		
159	St Joe River	Coeur d'Alene Lake	42N	09E	08		
160	Unnamed Stream	Halm Creek	42N	09E	08		
161	Unnamed Stream	St Joe River	42N	09E	08		
162	Unnamed Stream	St Joe River	42N	09E	08		
163	Unnamed Stream	St Joe River	42N	09E	08		

Attachment 1

	A	B	C	D	E	F	G
001	SOURCE NAME	TO TRIBUTARY	TOWNSHIP	RANGE	SECTION	QQ	SURVEY CODE AND NUMBER
164	Unnamed Stream	St Joe River	42N	09E	08		
165	Unnamed Stream	St Joe River	42N	09E	08		
166	Unnamed Stream	St Joe River	42N	09E	08		
167	Unnamed Stream	St Joe River	42N	09E	08		
168	Unnamed Stream	St Joe River	42N	09E	08		
169	Unnamed Stream	Halm Creek	42N	09E	09		
170	Pole Creek	Ruby Creek	42N	09E	18		
171	Ruby Creek	St Joe River	42N	09E	18		
172	St Joe River	Coeur d'Alene Lake	42N	09E	18		
173	Unnamed Stream	Pole Creek	42N	09E	18		
174	Unnamed Stream	St Joe River	42N	09E	18		
175	Unnamed Stream	St Joe River	42N	09E	18		
176	Unnamed Stream	St Joe River	42N	09E	18		
177	My Creek	Ruby Creek	42N	09E	19		
178	Ruby Creek	St Joe River	42N	09E	19		
179	Unnamed Stream	My Creek	42N	09E	19		
180	Unnamed Stream	My Creek	42N	09E	19		
181	Unnamed Stream	Ruby Creek	42N	09E	19		
182	Unnamed Stream	Ruby Creek	42N	09E	19		
183	Unnamed Stream	My Creek	42N	09E	20		
184	My Creek	Ruby Creek	42N	09E	30		
185	Unnamed Stream	My Creek	42N	09E	30		
186	Unnamed Stream	My Creek	42N	09E	30		
187	Unnamed Stream	My Creek	42N	09E	30		
188	Unnamed Stream	My Creek	42N	09E	30		
189	Unnamed Stream	My Creek	42N	09E	30		
190	Unnamed Stream	My Creek	42N	09E	30		

Attachment 1

	A	B	C	D	E	F	G
001	SOURCE NAME	TO TRIBUTARY	TOWNSHIP	RANGE	SECTION	QQ	SURVEY CODE AND NUMBER
191	Unnamed Stream	My Creek	42N	09E	30		
192	Unnamed Stream	My Creek	42N	09E	30		
193	Unnamed Stream	My Creek	42N	09E	30		
194	My Creek	Ruby Creek	42N	09E	31		
195	Unnamed Stream	My Creek	42N	09E	31		
196	Unnamed Stream	My Creek	42N	09E	31		
197	Unnamed Stream	My Creek	42N	09E	31		
198	Unnamed Stream	Scat Creek	43N	08E	25		
199	Scat Creek	St Joe River	43N	08E	35		
200	Unnamed Stream	Timber Creek	43N	08E	35		
201	Unnamed Stream	Timber Creek	43N	08E	35		
202	Scat Creek	St Joe River	43N	08E	36		
203	Unnamed Stream	Scat Creek	43N	08E	36		
204	Unnamed Stream	Scat Creek	43N	08E	36		
205	Unnamed Stream	Scat Creek	43N	08E	36		
206	Unnamed Stream	Scat Creek	43N	08E	36		
207	Unnamed Stream	Scat Creek	43N	08E	36		
208	Unnamed Stream	Scat Creek	43N	08E	36		
209	Unnamed Stream	Timber Creek	43N	08E	36		
210	Unnamed Stream	Timber Creek	43N	08E	36		
211	Unnamed Stream	Timber Creek	43N	08E	36		
212	Unnamed Stream	Red Ives Creek	43N	09E	02		
213	Unnamed Stream	Red Ives Creek	43N	09E	09		
214	Unnamed Stream	Red Ives Creek	43N	09E	10		
215	Unnamed Stream	Red Ives Creek	43N	09E	10		
216	Unnamed Stream	Red Ives Creek	43N	09E	10		
217	Unnamed Stream	Red Ives Creek	43N	09E	10		

Attachment 1

	A	B	C	D	E	F	G
001	SOURCE NAME	TO TRIBUTARY	TOWNSHIP	RANGE	SECTION	QQ	SURVEY CODE AND NUMBER
218	Unnamed Stream	Red Ives Creek	43N	09E	10		
219	Unnamed Stream	Red Ives Creek	43N	09E	10		
220	Unnamed Stream	Red Ives Creek	43N	09E	10		
221	Unnamed Stream	Red Ives Creek	43N	09E	10		
222	Unnamed Stream	Red Ives Creek	43N	09E	10		
223	Unnamed Stream	Red Ives Creek	43N	09E	10		
224	Unnamed Stream	Red Ives Creek	43N	09E	10		
225	Unnamed Stream	Red Ives Creek	43N	09E	10		
226	Unnamed Stream	Red Ives Creek	43N	09E	11		
227	Unnamed Stream	Red Ives Creek	43N	09E	11		
228	Unnamed Stream	Red Ives Creek	43N	09E	11		
229	Unnamed Stream	Red Ives Creek	43N	09E	11		
230	Unnamed Stream	Red Ives Creek	43N	09E	11		
231	Unnamed Stream	Red Ives Creek	43N	09E	13		
232	Unnamed Stream	Red Ives Creek	43N	09E	13		
233	Unnamed Stream	Red Ives Creek	43N	09E	13		
234	Unnamed Stream	Red Ives Creek	43N	09E	13		
235	Unnamed Stream	Red Ives Creek	43N	09E	13		
236	Unnamed Stream	Red Ives Creek	43N	09E	13		
237	Unnamed Stream	Red Ives Creek	43N	09E	13		
238	Red Ives Creek	St Joe River	43N	09E	14		
239	Unnamed Stream	Red Ives Creek	43N	09E	14		
240	Unnamed Stream	Red Ives Creek	43N	09E	14		
241	Unnamed Stream	Red Ives Creek	43N	09E	14		
242	Unnamed Stream	Red Ives Creek	43N	09E	14		
243	Unnamed Stream	Red Ives Creek	43N	09E	14		
244	Unnamed Stream	Red Ives Creek	43N	09E	14		

Attachment 1

	A	B	C	D	E	F	G
001	SOURCE NAME	TO TRIBUTARY	TOWNSHIP	RANGE	SECTION	QQ	SURVEY CODE AND NUMBER
245	Unnamed Stream	Red Ives Creek	43N	09E	14		
246	Unnamed Stream	Red Ives Creek	43N	09E	14		
247	Unnamed Stream	Red Ives Creek	43N	09E	14		
248	Unnamed Stream	Red Ives Creek	43N	09E	14		
249	Unnamed Stream	Red Ives Creek	43N	09E	14		
250	Red Ives Creek	St Joe River	43N	09E	15		
251	Unnamed Stream	Red Ives Creek	43N	09E	15		
252	Unnamed Stream	Red Ives Creek	43N	09E	15		
253	Unnamed Stream	Red Ives Creek	43N	09E	15		
254	Unnamed Stream	Red Ives Creek	43N	09E	15		
255	Unnamed Stream	Red Ives Creek	43N	09E	15		
256	Unnamed Stream	Red Ives Creek	43N	09E	15		
257	Unnamed Stream	Red Ives Creek	43N	09E	15		
258	Unnamed Stream	Red Ives Creek	43N	09E	15		
259	Unnamed Stream	Red Ives Creek	43N	09E	15		
260	Red Ives Creek	St Joe River	43N	09E	16		
261	Unnamed Stream	Red Ives Creek	43N	09E	16		
262	Unnamed Stream	Red Ives Creek	43N	09E	16		
263	Unnamed Stream	Red Ives Creek	43N	09E	16		
264	Unnamed Stream	Red Ives Creek	43N	09E	16		
265	Unnamed Stream	Red Ives Creek	43N	09E	16		
266	Red Ives Creek	St Joe River	43N	09E	20		
267	St Joe River	Coeur d'Alene Lake	43N	09E	20		
268	Unnamed Stream	St Joe River	43N	09E	20		
269	Unnamed Stream	St Joe River	43N	09E	20		
270	Unnamed Stream	St Joe River	43N	09E	20		
271	Unnamed Stream	St Joe River	43N	09E	20		

Attachment 1

	A	B	C	D	E	F	G
001	SOURCE NAME	TO TRIBUTARY	TOWNSHIP	RANGE	SECTION	QQ	SURVEY CODE AND NUMBER
272	Unnamed Stream	St Joe River	43N	09E	20		
273	Unnamed Stream	St Joe River	43N	09E	20		
274	Unnamed Stream	St Joe River	43N	09E	20		
275	Unnamed Stream	St Joe River	43N	09E	20		
276	Unnamed Stream	St Joe River	43N	09E	20		
277	Unnamed Stream	St Joe River	43N	09E	20		
278	Unnamed Stream	St Joe River	43N	09E	20		
279	Bedrock Creek	Red Ives Creek	43N	09E	21		
280	Red Ives Creek	St Joe River	43N	09E	21		
281	Unnamed Stream	Bedrock Creek	43N	09E	21		
282	Unnamed Stream	Bedrock Creek	43N	09E	21		
283	Unnamed Stream	Bedrock Creek	43N	09E	21		
284	Unnamed Stream	Bedrock Creek	43N	09E	21		
285	Unnamed Stream	Bedrock Creek	43N	09E	21		
286	Unnamed Stream	Red Ives Creek	43N	09E	21		
287	Unnamed Stream	Red Ives Creek	43N	09E	21		
288	Unnamed Stream	St Joe River	43N	09E	21		
289	Unnamed Stream	St Joe River	43N	09E	21		
290	Unnamed Stream	St Joe River	43N	09E	21		
291	Unnamed Stream	St Joe River	43N	09E	21		
292	Bedrock Creek	Red Ives Creek	43N	09E	22		
293	Unnamed Stream	Bedrock Creek	43N	09E	22		
294	Unnamed Stream	Bedrock Creek	43N	09E	22		
295	Unnamed Stream	Bedrock Creek	43N	09E	22		
296	Unnamed Stream	Bedrock Creek	43N	09E	22		
297	Unnamed Stream	Red Ives Creek	43N	09E	22		
298	Unnamed Stream	Red Ives Creek	43N	09E	22		

Attachment 1

	A	B	C	D	E	F	G
001	SOURCE NAME	TO TRIBUTARY	TOWNSHIP	RANGE	SECTION	QQ	SURVEY CODE AND NUMBER
299	Red Ives Creek	St Joe River	43N	09E	23		
300	Unnamed Stream	Bedrock Creek	43N	09E	23		
301	Unnamed Stream	Red Ives Creek	43N	09E	23		
302	Unnamed Stream	Red Ives Creek	43N	09E	23		
303	Unnamed Stream	Red Ives Creek	43N	09E	23		
304	Unnamed Stream	Red Ives Creek	43N	09E	23		
305	Unnamed Stream	Red Ives Creek	43N	09E	23		
306	Unnamed Stream	Red Ives Creek	43N	09E	23		
307	Unnamed Stream	Red Ives Creek	43N	09E	23		
308	Unnamed Stream	Red Ives Creek	43N	09E	23		
309	Unnamed Stream	Red Ives Creek	43N	09E	23		
310	Unnamed Stream	Red Ives Creek	43N	09E	23		
311	Unnamed Stream	Red Ives Creek	43N	09E	23		
312	Unnamed Stream	Red Ives Creek	43N	09E	23		
313	Unnamed Stream	Red Ives Creek	43N	09E	23		
314	Unnamed Stream	Red Ives Creek	43N	09E	23		
315	Unnamed Stream	Red Ives Creek	43N	09E	23		
316	Unnamed Stream	Red Ives Creek	43N	09E	23		
317	Unnamed Stream	Red Ives Creek	43N	09E	23		
318	Unnamed Stream	Red Ives Creek	43N	09E	23		
319	Red Ives Creek	St Joe River	43N	09E	24		
320	Unnamed Stream	Red Ives Creek	43N	09E	24		
321	Unnamed Stream	Red Ives Creek	43N	09E	24		
322	Unnamed Stream	Red Ives Creek	43N	09E	24		
323	Unnamed Stream	Red Ives Creek	43N	09E	24		
324	Unnamed Stream	Red Ives Creek	43N	09E	24		
325	Unnamed Stream	Red Ives Creek	43N	09E	24		

Attachment 1

	A	B	C	D	E	F	G
001	SOURCE NAME	TO TRIBUTARY	TOWNSHIP	RANGE	SECTION	QQ	SURVEY CODE AND NUMBER
326	Unnamed Stream	Red Ives Creek	43N	09E	24		
327	Unnamed Stream	Red Ives Creek	43N	09E	24		
328	Unnamed Stream	Red Ives Creek	43N	09E	24		
329	Unnamed Stream	Red Ives Creek	43N	09E	24		
330	Unnamed Stream	Red Ives Creek	43N	09E	24		
331	Unnamed Stream	Red Ives Creek	43N	09E	24		
332	Unnamed Stream	Red Ives Creek	43N	09E	24		
333	Red Ives Creek	St Joe River	43N	09E	25		
334	Unnamed Stream	Red Ives Creek	43N	09E	25		
335	Unnamed Stream	Red Ives Creek	43N	09E	25		
336	Unnamed Stream	Red Ives Creek	43N	09E	25		
337	Unnamed Stream	Red Ives Creek	43N	09E	25		
338	Bedrock Creek	Red Ives Creek	43N	09E	26		
339	Unnamed Stream	Bedrock Creek	43N	09E	26		
340	Unnamed Stream	Bedrock Creek	43N	09E	26		
341	Unnamed Stream	Bedrock Creek	43N	09E	26		
342	Unnamed Stream	Bedrock Creek	43N	09E	26		
343	Unnamed Stream	Bedrock Creek	43N	09E	26		
344	Unnamed Stream	Bedrock Creek	43N	09E	26		
345	Unnamed Stream	Bedrock Creek	43N	09E	26		
346	Unnamed Stream	Bedrock Creek	43N	09E	26		
347	Unnamed Stream	Bedrock Creek	43N	09E	26		
348	Unnamed Stream	Bedrock Creek	43N	09E	26		
349	Unnamed Stream	Bedrock Creek	43N	09E	26		
350	Unnamed Stream	Bedrock Creek	43N	09E	26		
351	Unnamed Stream	Bedrock Creek	43N	09E	26		
352	Unnamed Stream	Bedrock Creek	43N	09E	26		

Attachment 1

	A	B	C	D	E	F	G
001	SOURCE NAME	TO TRIBUTARY	TOWNSHIP	RANGE	SECTION	QQ	SURVEY CODE AND NUMBER
353	Unnamed Stream	Bedrock Creek	43N	09E	26		
354	Unnamed Stream	Bedrock Creek	43N	09E	26		
355	Unnamed Stream	Bedrock Creek	43N	09E	26		
356	Unnamed Stream	Red Ives Creek	43N	09E	26		
357	Unnamed Stream	Red Ives Creek	43N	09E	26		
358	Bedrock Creek	Red Ives Creek	43N	09E	27		
359	Line Creek	St Joe River	43N	09E	27		
360	Unnamed Stream	Bedrock Creek	43N	09E	27		
361	Unnamed Stream	Bedrock Creek	43N	09E	27		
362	Unnamed Stream	Bedrock Creek	43N	09E	27		
363	Unnamed Stream	Bedrock Creek	43N	09E	27		
364	Unnamed Stream	Color Creek	43N	09E	27		
365	Line Creek	St Joe River	43N	09E	28		
366	St Joe River	Coeur d'Alene Lake	43N	09E	28		
367	Unnamed Stream	Bedrock Creek	43N	09E	28		
368	Unnamed Stream	Bedrock Creek	43N	09E	28		
369	Unnamed Stream	Color Creek	43N	09E	28		
370	Unnamed Stream	Line Creek	43N	09E	28		
371	Unnamed Stream	Line Creek	43N	09E	28		
372	Unnamed Stream	Line Creek	43N	09E	28		
373	Unnamed Stream	Line Creek	43N	09E	28		
374	Unnamed Stream	Line Creek	43N	09E	28		
375	Unnamed Stream	St Joe River	43N	09E	28		
376	Unnamed Stream	St Joe River	43N	09E	28		
377	Unnamed Stream	St Joe River	43N	09E	28		
378	Unnamed Stream	St Joe River	43N	09E	28		
379	Unnamed Stream	St Joe River	43N	09E	28		

Attachment 1

	A	B	C	D	E	F	G
001	SOURCE NAME	TO TRIBUTARY	TOWNSHIP	RANGE	SECTION	QQ	SURVEY CODE AND NUMBER
380	Unnamed Stream	St Joe River	43N	09E	28		
381	Unnamed Stream	St Joe River	43N	09E	28		
382	Unnamed Stream	St Joe River	43N	09E	28		
383	Color Creek	St Joe River	43N	09E	29		
384	St Joe River	Coeur d'Alene Lake	43N	09E	29		
385	Unnamed Stream	St Joe River	43N	09E	29		
386	Unnamed Stream	St Joe River	43N	09E	29		
387	Unnamed Stream	St Joe River	43N	09E	29		
388	Unnamed Stream	St Joe River	43N	09E	29		
389	Unnamed Stream	St Joe River	43N	09E	29		
390	Unnamed Stream	St Joe River	43N	09E	29		
391	Unnamed Stream	St Joe River	43N	09E	29		
392	Unnamed Stream	St Joe River	43N	09E	29		
393	Unnamed Stream	St Joe River	43N	09E	29		
394	Unnamed Stream	St Joe River	43N	09E	29		
395	Unnamed Stream	St Joe River	43N	09E	29		
396	Unnamed Stream	St Joe River	43N	09E	29		
397	Unnamed Stream	St Joe River	43N	09E	29		
398	Unnamed Stream	St Joe River	43N	09E	30		
399	Unnamed Stream	St Joe River	43N	09E	30		
400	St Joe River	Coeur d'Alene Lake	43N	09E	31		
401	Scat Creek	St Joe River	43N	09E	31		
402	Unnamed Stream	St Joe River	43N	09E	31		
403	Unnamed Stream	St Joe River	43N	09E	31		
404	Unnamed Stream	St Joe River	43N	09E	31		
405	Unnamed Stream	Scat Creek	43N	09E	31		
406	Unnamed Stream	Scat Creek	43N	09E	31		

Attachment 1

	A	B	C	D	E	F	G
001	SOURCE NAME	TO TRIBUTARY	TOWNSHIP	RANGE	SECTION	QQ	SURVEY CODE AND NUMBER
407	Unnamed Stream	Scat Creek	43N	09E	31		
408	Unnamed Stream	Scat Creek	43N	09E	31		
409	Color Creek	St Joe River	43N	09E	32		
410	Game Creek	St Joe River	43N	09E	32		
411	St Joe River	Coeur d'Alene Lake	43N	09E	32		
412	Unnamed Stream	Game Creek	43N	09E	32		
413	Unnamed Stream	Game Creek	43N	09E	32		
414	Unnamed Stream	Game Creek	43N	09E	32		
415	Unnamed Stream	Game Creek	43N	09E	32		
416	Unnamed Stream	Game Creek	43N	09E	32		
417	Unnamed Stream	Game Creek	43N	09E	32		
418	Unnamed Stream	Game Creek	43N	09E	32		
419	Unnamed Stream	Game Creek	43N	09E	32		
420	Unnamed Stream	Game Creek	43N	09E	32		
421	Unnamed Stream	Game Creek	43N	09E	32		
422	Unnamed Stream	Game Creek	43N	09E	32		
423	Unnamed Stream	St Joe River	43N	09E	32		
424	Unnamed Stream	St Joe River	43N	09E	32		
425	Unnamed Stream	St Joe River	43N	09E	32		
426	Unnamed Stream	St Joe River	43N	09E	32		
427	Unnamed Stream	St Joe River	43N	09E	32		
428	Unnamed Stream	St Joe River	43N	09E	32		
429	Unnamed Stream	St Joe River	43N	09E	32		
430	Unnamed Stream	St Joe River	43N	09E	32		
431	Unnamed Stream	St Joe River	43N	09E	32		
432	Unnamed Stream	St Joe River	43N	09E	32		
433	Unnamed Stream	St Joe River	43N	09E	32		

Attachment 1




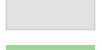

	A	B	C	D	E	F	G
001	SOURCE NAME	TO TRIBUTARY	TOWNSHIP	RANGE	SECTION	QQ	SURVEY CODE AND NUMBER
434	Unnamed Stream	St Joe River	43N	09E	32		
435	Color Creek	St Joe River	43N	09E	33		
436	Game Creek	St Joe River	43N	09E	33		
437	Unnamed Stream	Color Creek	43N	09E	33		
438	Unnamed Stream	Color Creek	43N	09E	33		
439	Unnamed Stream	Color Creek	43N	09E	33		
440	Unnamed Stream	Color Creek	43N	09E	33		
441	Unnamed Stream	Color Creek	43N	09E	33		
442	Unnamed Stream	Color Creek	43N	09E	33		
443	Unnamed Stream	Color Creek	43N	09E	33		
444	Unnamed Stream	Color Creek	43N	09E	33		
445	Unnamed Stream	Color Creek	43N	09E	33		
446	Unnamed Stream	Color Creek	43N	09E	33		
447	Unnamed Stream	Color Creek	43N	09E	33		
448	Unnamed Stream	Game Creek	43N	09E	33		
449	Unnamed Stream	Game Creek	43N	09E	33		
450	Unnamed Stream	St Joe River	43N	09E	33		
451	Color Creek	St Joe River	43N	09E	34		
452	Unnamed Stream	Color Creek	43N	09E	34		
453	Unnamed Stream	Color Creek	43N	09E	34		
454	Unnamed Stream	Color Creek	43N	09E	34		
455	Unnamed Stream	Color Creek	43N	09E	34		
456	Unnamed Stream	Color Creek	43N	09E	34		
457	Unnamed Stream	Color Creek	43N	09E	34		
458	Unnamed Stream	Color Creek	43N	09E	34		
459	Bedrock Creek	Red Ives Creek	43N	09E	35		
460	Unnamed Stream	Bedrock Creek	43N	09E	35		

Attachment 1

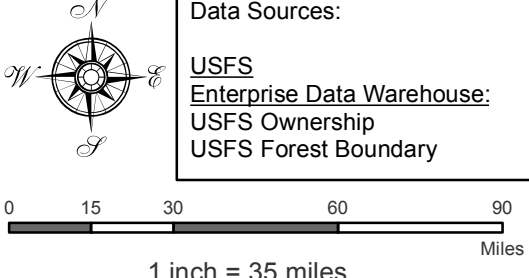
	A	B	C	D	E	F	G
001	SOURCE NAME	TO TRIBUTARY	TOWNSHIP	RANGE	SECTION	QQ	SURVEY CODE AND NUMBER
461	Unnamed Stream	Red Ives Creek	43N	10E	18		
462	Unnamed Stream	Red Ives Creek	43N	10E	18		
463	Unnamed Stream	Red Ives Creek	43N	10E	18		
464	Unnamed Stream	Red Ives Creek	43N	10E	18		
465	Unnamed Stream	Red Ives Creek	43N	10E	18		
466	Unnamed Stream	Red Ives Creek	43N	10E	18		
467	Red Ives Spring	Red Ives Creek	43N	09E	23	SESW	

Attachment 2
 Place of Use Map Fire Suppression - Water Right No. 91-07933A
 National Forests in Idaho and the Kaniksu, Lolo and Kootenai NF in Montana

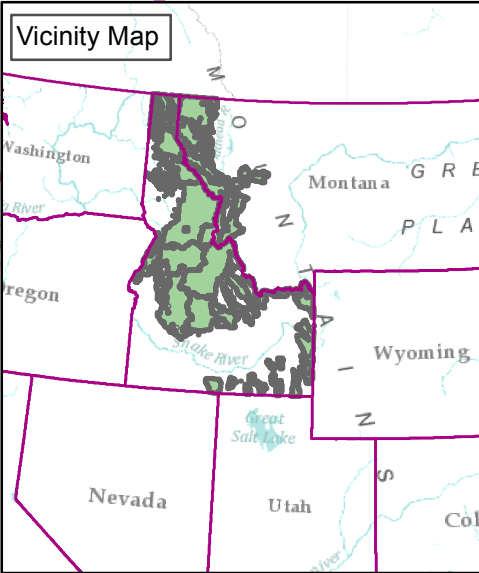
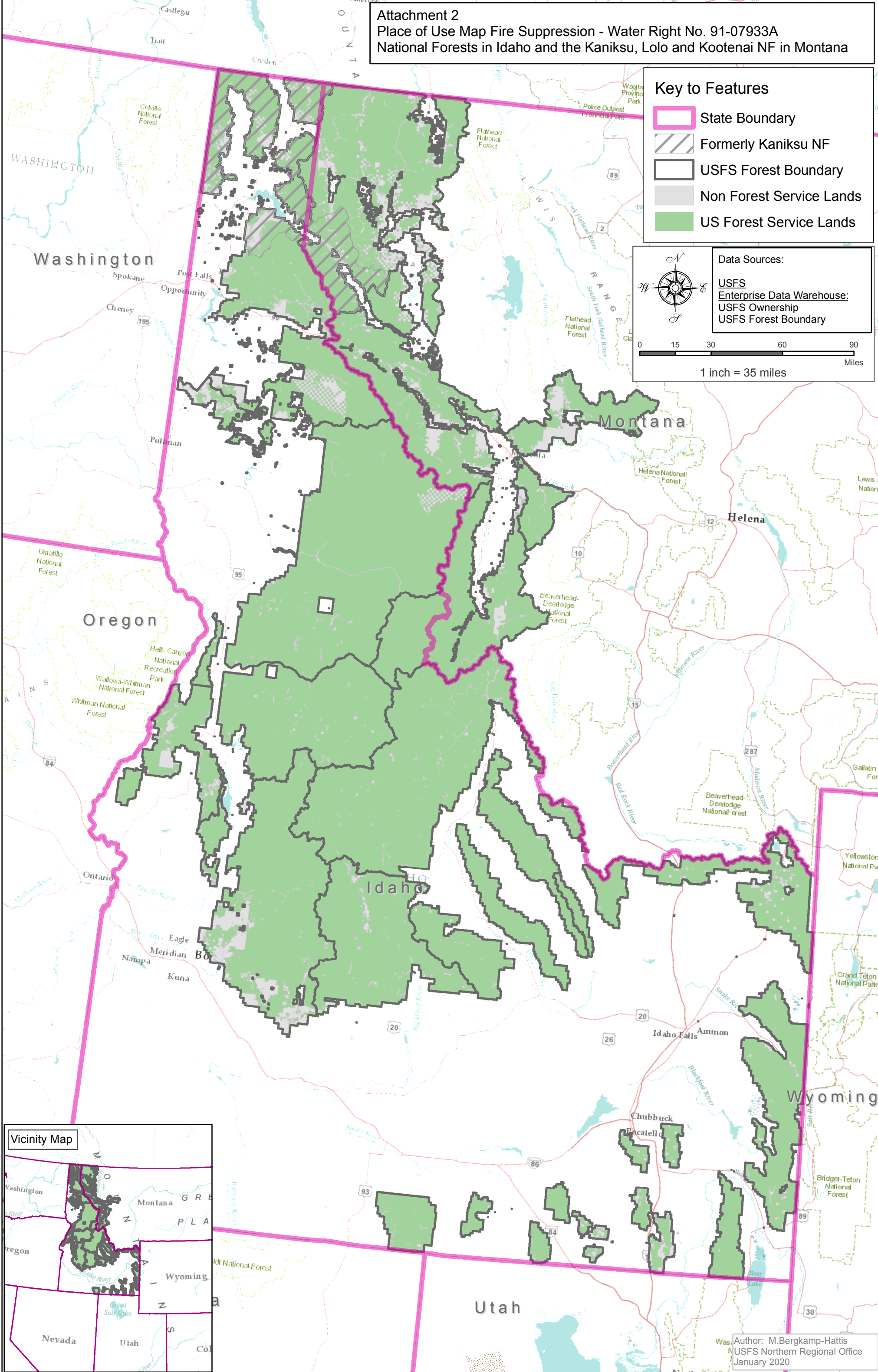
Key to Features

-  State Boundary
-  Formerly Kaniksu NF
-  USFS Forest Boundary
-  Non Forest Service Lands
-  US Forest Service Lands

Data Sources:
 USFS
 Enterprise Data Warehouse:
 USFS Ownership
 USFS Forest Boundary



0 15 30 60 90
 Miles
 1 inch = 35 miles



Author: M.Bergkamp-Hattis
 USFS Northern Regional Office
 January 2020